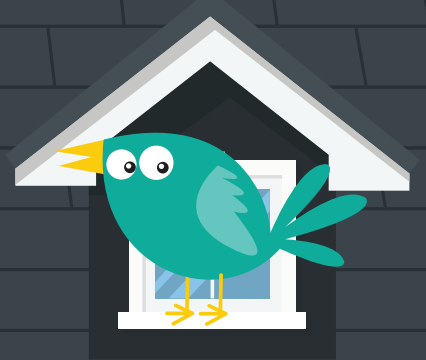
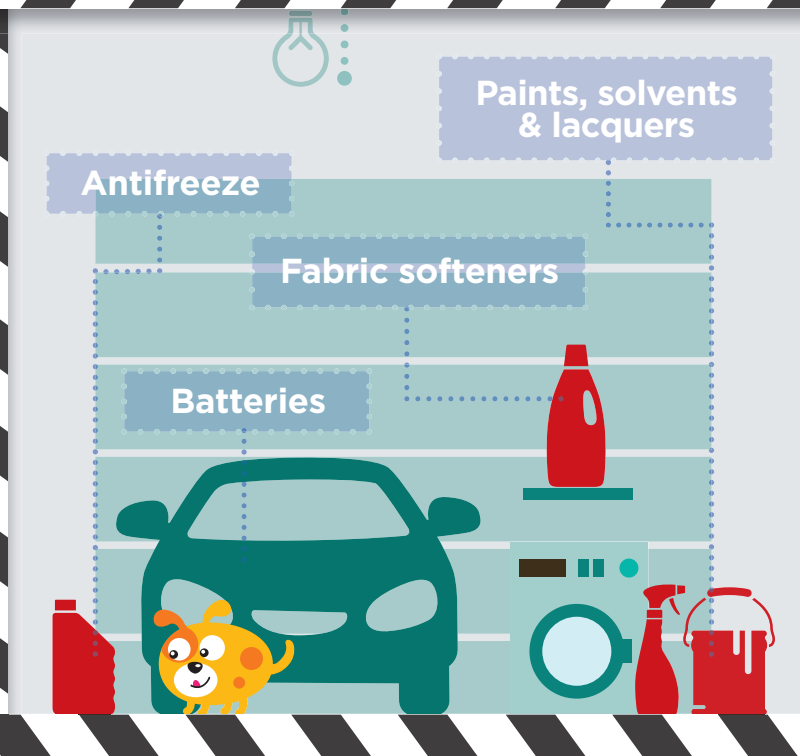
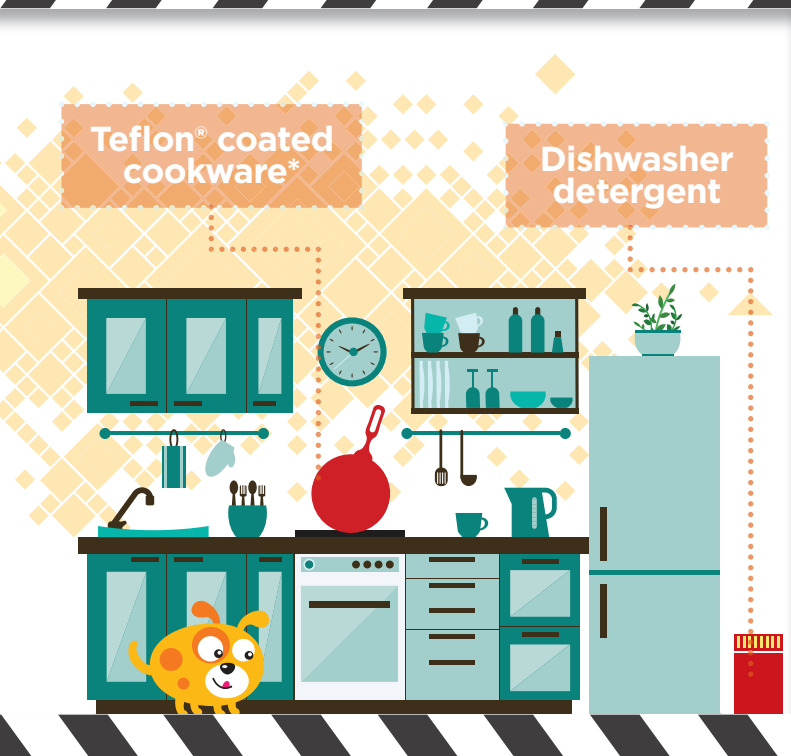
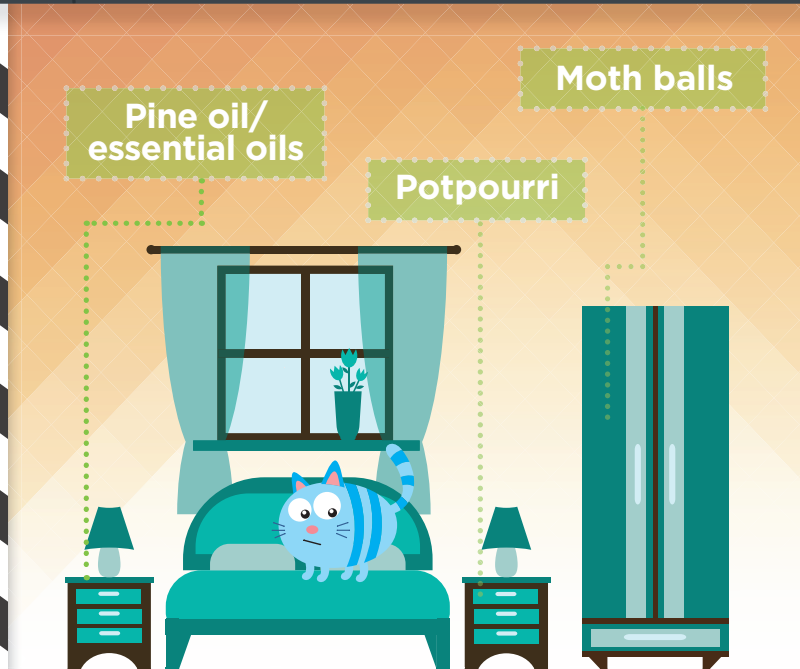
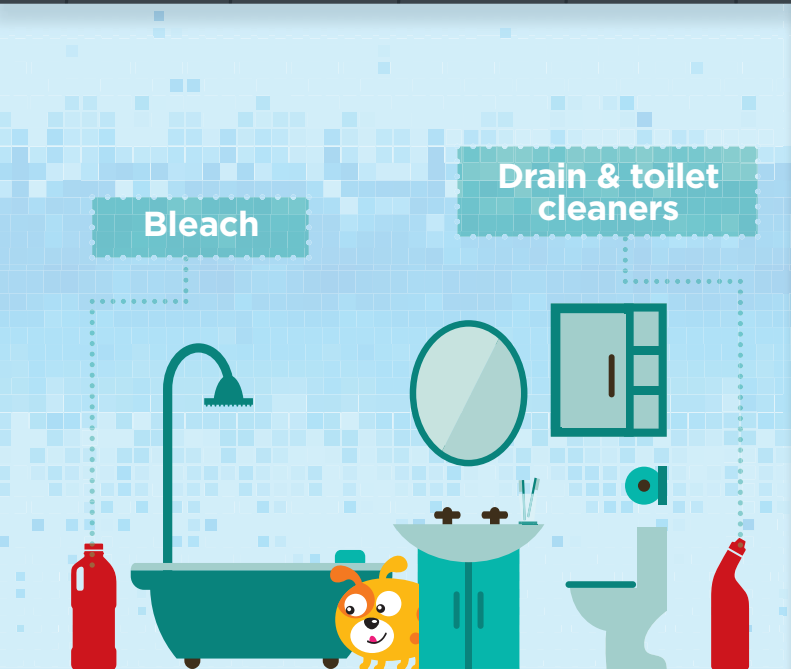


# Household pet toxins



PRESENTED BY NATIONWIDE®

These common household chemicals can cause serious injury to your pet if ingested.



**Absorbed poisons**

Chemicals can enter the body through the skin. Canine spot-on flea treatment, for instance, is highly toxic when applied on cats. Concentrated tea tree oil is also toxic to dogs and cats.

**Inhaled poisons**

Carbon monoxide, smoke and chemical fumes are all forms of inhaled poisons. Exposure can result in disorientation or unconsciousness, with or without coughing.

**Signs of toxicity**

- Excessive salivation
- Racing or irregular pulse
- Vomiting
- Cold extremities
- Lethargy
- Rapid breathing



\*Teflon® coated cookware emits PTFE fumes when overheated, which can be fatal to birds.

Nationwide® covers poisonings, household accidents and more.  
Get a quote at [PetsNationwide.com](https://www.PetsNationwide.com)



**Nationwide®**  
is on your side